

SOUTHERN PACIFIC COAST REGION

/Guy McCaskie

The weather remained relatively stable along the southern Pacific Coast throughout the fall with no major storms from the north. No major movements of birds were evident, although clearly a steady stream of migrants was passing through the Region much of the time. A minor influx of nuthatches was the only indication any mountain species was on the move, and no more than one or two individuals of any of our sporadic visitors from the north were encountered.

The exploration of new areas offshore resulted in the discovery of two species new to California, and added to our knowledge of pelagic bird distribution. Continued interest in shorebirds, with some areas (e.g., McGrath S.P.) receiving daily coverage, resulted in the discovery of many rarities, along with inland

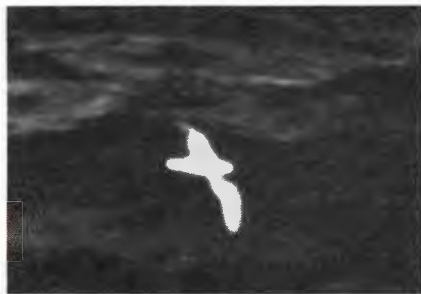
records for most species normally found only along the coast. The checking of "vagrant traps" along the coast and out in the desert is still the most popular pursuit of many active birders in the Region, and it is probable that every vagrant stopping at some of the regularly worked spots (e.g., Gaviota) is found and identified. As such the records of some species formerly unrecorded in California (e.g., Clay-colored Sparrow), are too numerous to cite individually, and we end up with a false impression of their status in California. Such are the problems in preparing a seasonal report for a Region harboring 435 species, 75 of which were considered casual or accidental this past fall.

LOONS, GREBES — An Arctic Loon, decidedly rare inland, was near Lancaster. Los Angeles Co., Nov. 10 (BB). Single **Red-necked Grebes**, rare in s. California, were at Refugio S.P., Santa Barbara Co., Nov. 3 (PL). Goleta, Santa Barbara Co., Nov. 16-30+ (LB) and at

Pt. Mugu, Ventura Co., Nov. 18-25 (REW). A Horned Grebe at Oasis, Mono Co., Oct. 30 (DLD) was far inland and away from any large body of water.

ALBATROSSES, SHEARWATERS, STORM-PETRELS — Up to four **Black-footed Albatrosses**/day were encountered during trips far off Morro Bay in late November, indicating small numbers present in these waters. **Northern Fulmars** were present off-shore in November with 36 off Morro Bay Nov. 17 (REW) and five off La Jolla, San Diego Co., Nov. 4 (DPo), suggesting a movement into s. California waters. A **Flesh-footed Shearwater** off Morro Bay Nov. 24 (REW) was the only one sighted this fall. Three **New Zealand Shearwaters** off Morro Bay Nov. 17 (GMCC) were somewhat late. Three or four **Short-tailed Shearwaters** off Morro Bay Nov. 17-30+ (REW) were expected, the species occurring in late fall and early winter. **Manx Shearwaters** were relatively numerous close to

shore in the s. part of the Region during November, with a high count of 11,700 made from La Jolla Nov. 14 (AH), but 30 seen from Pt. Mugu Nov. 25 (REW) were the only ones reported n. of Los Angeles.



Cook's Petrel (*Pterodroma cookii*), Davidson Seamount, Nov. 17, 1979. The clean white underparts, with no black markings on the undersides of the wings, as well as the pale gray coloration of the head (black confined to a small mark around the eye) are all visible in this picture. The upperside of the bird was the same pale gray as the top of the head with a bold blackish W pattern across the wings. Photo/Jeri M. Langham.

S.A.

The most startling event of the season was the discovery of *Cookilaria* petrels within 100 mi of shore. After learning of six sightings of *Pterodroma* petrels 100-200 mi out during oceanic survey work in early October (GFr,RLP), a boat was chartered to explore the waters around Davidson Seamount (35°44'N, 122°43'W), 65± mi s.w. of Pt. Sur in the extreme n.w. corner of this Region. On Nov. 17, seven *Cookilaria* petrels were seen, three being identified as **Cook's Petrels** (*Pterodroma cookii*) and one as **Stejneger's Petrel** (*Pterodroma longirostris*) (GMcC,JD,RS), with one Cook's Petrel photographed (DR ph., S.D.N.H.M.). On Nov. 24, seven more *Cookilaria* petrels were seen, two of which were clearly **Cook's Petrels** (REW) and Dec. 1 another **Cook's Petrel** was identified at Davidson Seamount (GMcC). Additional work is necessary to determine when and if these birds occur regularly in this area. This is a new area for exploration by hardy observers able to cope with long periods aboard small boats.

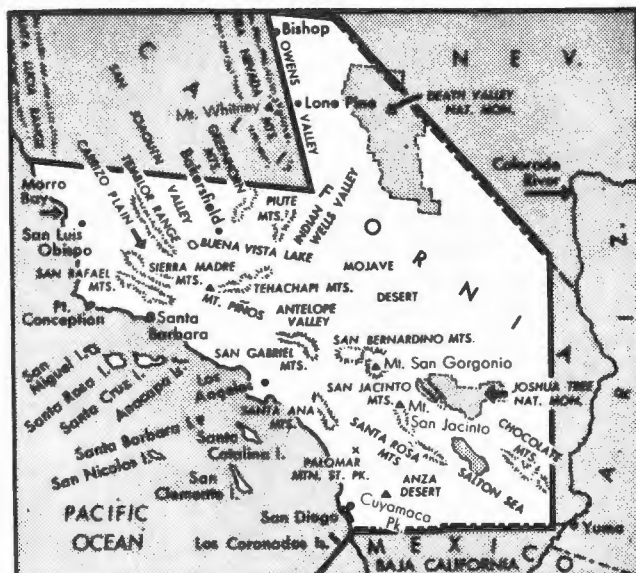
Although these sightings constitute the first records for both species in California it is significant to note Cook's Petrel regularly reaches the North Pacific, occurring off Baja California where sometimes termed "common" (L. M. Loomis, *Proc. Cal. Acad. Sci.*, 4th ser., Vol. II, pt. 2:93-94, 1918 and J. R. Jehl, *pers. comm.*), and that Stejneger's Petrel also crosses the equator, having been collected ca., 600 mi off c. California (J. Moffitt, *Auk*, 55:255-256, 1938). The inclusion of *Pterodroma leucoptera* in two popular field guides (Audubon Western Bird Guide and A Field Guide to Western Birds) as a species having occurred "600 miles off San Francisco" is an error resulting from nomenclature revisions, and should be corrected to Stejneger's Petrel, there being no such record for White-winged (Gould's) Petrel.

Two **Fork-tailed Storm-Petrels** at Davidson Seamount Dec. 1 (REW) were near the s. limit of the species' normal range. Although **Leach's Storm-Petrels** are regarded as relatively common off San Diego in September, i.e., 95 seen there Sept. 9 (GMcC), few records exist for s. California waters in late fall; hence, the presence of 20 at Davidson Seamount Dec. 1 (JD) was of interest. A dead Ashy Storm-Petrel was found on a street in Goleta Nov. 9 (JG); it is rare for any storm-petrel to venture inland.

A **Galapagos Storm-Petrel**, only the fourth to be reported in California, was seen briefly at Davidson Seamount Dec. 1 (REW,LB). Least Storm-Petrels were relatively common off the s. half of the Region in September as indicated by 3200 off San Diego Sept. 8 (GMcC), but a count of nine off Ventura Sept. 8 (REM) and 35 off Santa Barbara the same day (JD) suggest numbers did not go too far n.; two off San Diego Oct. 22 (DPo) were the latest this year.

TROPICBIRDS, PELICANS, FRIGATE-BIRDS — The only Red-billed Tropicbirds reported were one near San Clemente I., Sept. 16 (CGE), and single birds at 35 and 65 mi off Pt. Arguello, Santa Barbara Co., Sept. 30 (GFr). A **Red-tailed Tropicbird**, a species unrecorded in North American waters prior to this year, was seen at 34°58'N, 122°36'W 95 mi off Pt. Buchon, San Luis Obispo Co., Oct. 7 (GFr,RLP) with three others noted 100-200 mi off the coast Sept. 30 - Oct. 8. Brown Pelicans reached peak numbers at the Salton Sea in mid-August with 86 counted Aug. 11 (PU), and 50± still present at the end of September; one flying N over Daggett, San Bernardino Co., Sept. 20 (RR) was well out into the Mojave Desert, and another on a street in Rancho Bernardo, San Diego Co., Aug. 25 (JMcN) was at an unusual location. Sightings of Magnificent Frigatebirds from along the coast declined sharply after the first week of August with singles at McGrath S.P., Ventura Co., Sept. 6 (LS), Malibu, Los Angeles Co., Sept. 26 (TF) and off La Jolla Oct. 29 (AH) the latest. At the Salton Sea three were still present Sept. 23 (GMcC) after record numbers occurred there in July and August. Five over L. Cuyamaca in the Laguna Mts., Aug. 2 (JRS), one over nearby L. Henshaw Sept. 5 (PU) and another at L. Hodges Sept. 7 (JMcN) were all at inland localities in San Diego County.

HERONS, STORKS — A Little Blue Heron in San Diego Aug. 25 (DDS) was one of very few adults reported in fall. Two imm. Reddish Egrets appeared in the San Diego area Aug. 19 (CGE,D&BS) with one remaining to Sept. 26 (CGE) and the other still present Oct. 26 (AH). The ad. Louisiana Heron at the north end of the Salton Sea (hereafter, N.E.S.S.) was



last seen Sept. 15 (SG); one on San Diego Bay Oct. 31 (D&BS) was the first of five arriving in the San Diego area where a few regularly winter. A Least Bittern in Goleta Nov. 4 (LRB) along with single birds at McGrath S.P., Aug. 13 (RL), 21 (REW) and Sept. 14 (KC) were of interest since few are now found along the coast n. of Los Angeles. Am. imm. Wood Stork around Harbor L., in San Pedro, Los Angeles Co., Sept. 18 - Oct. 19 (DA) apparently moved to Whittier Nov. 1-17 (KC). This species is now accidental along the coast of California, although formerly of annual occurrence.

SWANS, GEESE, DUCKS — The only Whistling Swans reported away from the Owens Valley were three at Furnace Creek Ranch in Death Valley (hereafter, F.C.R.), Nov. 24 (LLN) and what were probably the same three birds at Saratoga Springs Nov. 26 (LLN). Six White-fronted Geese, now rare along the coast, were at the Santa Maria R. mouth, Santa Barbara Co., Nov. 23 (REW) and eight were at L. Henshaw Nov. 13 (RH). A Ross' Goose at Tecopa, Inyo Co., Nov. 21 (JT) was one of a very few ever reported in the n.e. portion of the Region. A Eur. Wigeon at McGrath S.P., Oct. 28-30 (REW), another at Pt. Mugu Oct. 28 (REW) and a third on L. Henshaw Nov. 13 (RH) were the first for the winter. A ♂ Tufted Duck on Quail L., near Gorman, Los Angeles Co., Nov. 10-30+ (BB) was probably the same individual that spent last winter there. A ♀ Barrow's Goldeneye at F.C.R., Nov. 22 (GMcC) was the third to be found here in four years, suggesting that the species is other than accidental at this locality. An Oldsquaw, scarce in s. California, was at the Santa Maria R. mouth Nov. 23-30+ (LB), another was in Goleta Nov. 4-15 (LB), a third was in Santa Barbara Nov. 18-30+ (LRB), a fourth was at Oceanside, San Diego Co., Nov. 1 (H&NS) and a fifth was seen flying S off La Jolla Nov. 9 (AH). The ♂ Harlequin Duck remained in Carlsbad throughout the fall, having been present since 1977. White-winged Scoters were much more numerous than usual after the first appeared in late October, with 228 at Pt. Mugu Nov. 22 (REW) and 32 at Huntington Beach Pier Nov. 26 (R&MW). The first Black Scoters of the fall were three at Pt. Mugu Nov. 3 (REW) with small numbers noted along the entire coast thereafter.

HAWKS — A White-tailed Kite at the Mt. Palomar Observatory, San Diego Co., Sept. 14 (RH) was at a high elevation. An imm. Goshawk at F.C.R., Nov. 4 (JD) was the only one reported in the n.e. portion of the Region. As usual a few Broad-winged Hawks were found with one at Bakers Dam, Joshua Tree Nat'l Mon., Sept. 14 (LJ) and another at F.C.R., Oct. 24 (REW) being inland, and one in Goleta Oct. 29 (PL), one in Santa Barbara Oct. 15 (LRB), another near Oxnard Oct. 12 (REW), one in Rosemead, Los Angeles Co., Nov. 21-22 (KG), and singles on Pt. Loma (CGE) and Imperial Beach (DPA), San Diego Co., Oct. 15 being along the coast. Most interesting were two concentrations of migrant Swainson's Hawks, 500-500 over the Edmiston Pump Station at the s. end of the San Joaquin Valley Oct. 26 (J.K.Bachman, *fide* PHB) and 200 going to roost near Temecula, Riverside Co., Oct. 27 (JRJ); numbers of these magnitudes have not been reported in California in 15 years. The breeding Zone-tailed Hawks found on Santa Rosa Mt., were not seen after early August and the nesting is believed to have failed. An ad. Zone-tailed Hawk seen near Poway, San Diego Co., Sept. 3 (JMcC) was believed migrating. A Ferruginous Hawk near Santa Maria Sept. 10 (LB) was the earliest reported this fall, and the species was found in suitable habitat throughout the Region by mid-October.

CRANES — A Sandhill Crane flying over Burbank, Los Angeles Co., Nov. 28 (JBr) and five at San Jacinto L., Riverside Co., Nov. 17 (EAC) were away from areas of normal occurrence, and established one of the few modern-day records of this species on the coastal slope of s. California.

SHOREBIRDS — One or two Black Oystercatchers were at Pt. Mugu Sept. 14 - Oct. 20 (KC, REW) and up to three were on Pt. Loma Sept. 15 - Nov. 16 (CGE); this species is rare on the coast s. of San Luis Obispo County, although common on most offshore islands. A Mountain Plover at F.C.R., Sept. 1 (JMcC) was exceptionally early; one near Santa Maria Oct. 7 (JD) along with 25± individuals in the Ventura area Oct. 7 - Nov. 2 (REW) and two in Carson, Los Angeles Co., Oct. 27 (BB) were of interest as the species is now rarely noted as a migrant on the coast away from San Diego County. A fair number of Am. Golden Plovers moved S along the Pacific Coast with at least 20 in Santa Barbara County Aug. 19 - Oct. 10 (PL), 37 on the coast of Ventura County Aug. 31 - Nov. 2 (REW) and five around San Diego Sept. 23 - Oct. 26 (PU); one 30 mi n. of Blythe, Riverside Co., Oct. 18 (BA) and another at L. Hodges Nov. 4 (EC) were inland. A flock of 27 Am. Golden Plovers near Santa Maria Nov. 23-30+ (LB) and eight at Pt. Mugu Nov. 18-30+ (REW) were believed wintering. An **Upland Sandpiper** at Pt. Mugu Sept. 9 (REW) was only the third found during fall in s. California. In addition to the normal scattering of Solitary Sandpipers throughout the e. portion of the Region during August and early September, larger-than-normal numbers were encountered along the coast with 17 in Santa Barbara County Aug. 15 - Sept. 30 (PL), 33 in Ventura County Aug. 11 - Sept. 23 (REW), at least four in Los Angeles County in the same period (KG) and 20 in San Diego County Aug. 5 - Sept. 23 (PU). Three Ruddy Turnstones at

the south end of the Salton Sea (hereafter, S.E.S.S.) Aug. 4 (DPA) were at an inland locality where small numbers are reported every year, but one near Lancaster July 29 - Aug. 2 (FH) and another there Aug. 11 (JD) were the first records for that area.

The only Red Knots found on the Salton Sea were two Aug. 11 (PU) and another Aug. 18 (H&PB), but one was near Lancaster Aug. 11 (DLD) and another at L. Hodges Sept. 7 (JMcC); this species is regular on the Salton Sea but casual elsewhere away from the coast. A Sanderling near Daggett Oct. 3 (EAC), three near Lancaster Aug. 11 (JD) and another on L. Hodges Aug. 17 (JMcC) were inland; few are found inland away from the Salton Sea. Semipalmated Sandpipers were again found this fall with one at Lancaster July 31 - Aug. 2 (KG), up to two near there Aug. 4-11 (FH), one or two at McGrath S.P., Aug. 20-23 (REW), up to three there Aug. 30 - Sept. 6 (REW), one or two there Sept. 20-23 (REW), one near Oxnard Aug. 30 (DLD) and another there Sept. 11 (REW); it is becoming apparent that small numbers move through California in August and September, all to date being immature. Baird's Sandpipers passed through the Region in fair numbers during August and September with 180± being reported, with two at McGrath S.P., Oct. 13 (REW) the latest. A Sharp-tailed Sandpiper in Goleta Sept. 19 (PL) and two at Pt. Mugu Oct. 13-14 (REW) were the only ones found despite time spent searching for this rare straggler from Asia. Good numbers of Pectoral Sandpipers were found along the coast n. of Los Angeles, with 450+ in Santa Barbara and Ventura Counties Aug. 29 - Nov. 7 (PL, REW), but only a handful could be found to the s. in San Diego County; significant sightings included 14 at L. Henshaw in the mountains of San Diego County Oct. 7 (RH); one at Baker, San Bernardino Co., Nov. 12 (EAC) was late for an inland locality, and one in Goleta Nov. 24-25 (JG) was exceptionally late for anywhere in California. A **Curlew Sandpiper** at McGrath S.P., Sept. 27-28 (REW) was only the second found in this Region. As usual a few Stilt Sandpipers were at the Salton Sea with a high count of 12 at S.E.S.S., Aug. 19 (JD). However, the species is rare away from that area; hence, the occurrence of one in Lancaster Aug. 2 (JD), another nearby Aug. 6 (JD), two near Bard in the Colorado R. Valley Aug. 17 (SG), one in Goleta Sept. 4 (PL), one at McGrath S.P., Sept. 2 (REW), another near Oxnard Sept. 7-11 (LS), five different birds at Pt. Mugu Sept. 15-30 (REW) and one near Carlsbad, San Diego Co., Aug. 9 (EC) indicated a more widespread movement than usual. A Stilt Sandpiper at Pt. Mugu Nov. 18-30+ (REW) was believed wintering.

For the second consecutive year significant numbers of Buff-breasted Sandpipers occurred along the coast with four at McGrath S.P., Sept. 6 (DLD), at least seven near Oxnard Sept. 16-18 (TC), another there Sept. 23 - Oct. 6 (REW), one near Imperial Beach Oct. 9 (EC) and two exceptionally late birds there Oct. 12-22 (DPA); prior to last fall only six had been recorded in this Region. Eight Ruffs were found along the coast with one at the Santa Maria R. mouth Sept. 14-18 (PL ph., S.D.N.H.M.) one near Santa Maria Sept. 30 - Oct. 2 (PL), one at McGrath S.P., Sept. 2-7 (DLD) being joined by a second Sept. 7 (REW), two at Pt. Mugu Sept. 15 (REW) with one remaining to

Sept. 23 (REW) and another there Oct. 14 (REW), and the eighth in San Pedro Oct. 4-8 (MH ph., S.D.N.H.M.) along with one inland near Lancaster Oct. 3 (REW). An influx of Red Phalaropes was noted in October when small numbers were found along the entire coast, 43 around Santa Maria Oct. 27 (PL) and 35 at McGrath S.P., Nov. 2 (REW) were the largest concentrations reported, and most had left by late November.

JAEGERS, SKUAS — Parasitic Jaegers were apparently constantly present at N.E.S.S., Sept. 20 - Nov. 13 (LJ) with a high count of six there Sept. 23 (JMcC); this species occurs regularly on the Salton Sea each fall but is accidental elsewhere away from the coast. It was a good fall for Long-tailed Jaegers with two off Oxnard Sept. 8 (REW), one off San Diego the same day (JMcC), three off San Diego Sept. 9 (JD) and another there Sept. 16 (CGE). A S. Polar Skua 6 mi off San Diego Oct. 4 (DPO) was in an area where rare in fall and another at Davidson Seamount Nov. 17 (JMcC) was somewhat late.

GULLS, TERNS, SKIMMERS — An ad. Glaucous-winged Gull at Goleta Sept. 19 (PL) and another at McGrath S.P., Sept. 29 (REW) were the first of the wintering population to arrive. A Herring Gull in San Diego Sept. 23 (EC) was the earliest one reported this fall, and one on L. Palmdale in the Antelope Valley Oct. 20 (JD) was one of the very few found inland away from the Salton Sea in this Region. A Mew Gull at McGrath S.P., Oct. 12 (REW) was a little on the early side. As usual a few Franklin's Gulls were found with 11 reported Sept. 20 - Nov. 30. An imm. Sabine's Gull on L. Tinnemaha in the Owen's Valley Oct. 3 (REW) and another at N.E.S.S., Sept. 23 (JMcC) were both far inland, the species being exceptionally rare away from the open ocean.

A Gull-billed Tern at N.E.S.S., Nov. 21 (LJ) was quite late. Common Terns occur in large numbers on the Salton Sea every fall, but are rarely reported from elsewhere inland; hence, small numbers (max. five Sept. 2) around Lancaster Aug. 11 - Sept. 30 (KG) along with two on L. Hodges Aug. 5 (JMcC) and another there Sept. 2-15 (DPA) were of interest. Eleven Least Terns on San Diego Bay Sept. 16 (AH) were the last seen. A Black Skimmer at Pt. Mugu Aug. 25 (REW) followed by two more Sept. 16 (REW) were the only ones found on the coast away from San Diego.

ALCIDS — Common Murres moved into s. California this fall with 80 off Pt. Mugu Nov. 22 (REW) and up to six off La Jolla Oct. 28 - Nov. 2 (AH). A Marbled Murrelet near Morro Bay Nov. 3 (EVJ) and another in San Diego Nov. 29 (SD), along with an Ancient Murrelet in San Diego Sept. 8 (PU) were the first of many to reach the coast in an unprecedented influx. Two Xantus' Murrelets off Morro Bay Nov. 17 (REW) were of interest since few records exist for this time of year. There were only 16 Craveri's Murrelets reported, 35 mi w. of Pt. Piedras Blancas, San Luis Obispo Co., Oct. 1 (GFr).

PIGEONS THROUGH HUMMINGBIRDS — A Band-tailed Pigeon on Pt. Loma Sept. 7 (CGE) was some distance from an area

of normal occurrence. As usual a few White-winged Doves strayed W to the coast with ten reported between Santa Barbara and San Diego Aug. 21 - Nov. 20. Unexpected were single Ground Doves at F.C.R., Oct. 10 (REW) and 25-28 (LLN), along with one in San Pedro Oct. 28 (FH), and another in nearby Westwood Nov. 23 (FH); F.C.R. is n. of the species' normal range and few have been found in the Los Angeles area. Two Yellow-billed Cuckoos near Tecopa Aug. 25, with one still present Sept. 17 (JT) were believed to have nested locally. A Long-eared Owl at Gaviota, Santa Barbara Co., Oct. 8-26 (LRB) was one of a very few ever found in this area. A group of 25 Short-eared Owls near the Santa Maria R. mouth Nov. 23-30+ (LB) was a significant concentration. Reports of Poor-wills believed to be migrants included two in Gaviota Oct. 7 (GFu), one in Goleta Aug. 27 (PL), one near Oxnard Nov. 4 (REW) and another on Pt. Fermin Oct. 8 (BD). A Black Swift over Fillmore Sept. 1 (REW) was the only migrant reported. Five Broad-billed Hummingbirds were found with a male 20 mi n. of Blythe Sept. 30 - Nov. 30+ (SC), another male in Cabazon, Riverside Co., Sept. 24 (LJ), a female in Gaviota Oct. 10 - Nov. 30+ (LRB, ph., S.D.N.H.M.), a male in Santa Barbara Oct. 9-14 (LRB) and another male in San Diego Nov. 28-30+ (JD); this species is now occurring annually and apparently increasing.



Male Broad-billed Hummingbird, Santa Barbara, Calif., Oct. 9, 1979. Photo/James M. Greaves.

WOODPECKERS — Four Com. (Yel.-sh.) Flickers were reported from along the coast during October and November; pure birds are quite scarce on the coast, although slightly commoner along the e. border of the Region. At least five imm. Yellow-bellied Sapsuckers showing all the characters of the e. race *S. v. varius* were found in the e. portion of the Region with one at F.C.R., Oct. 22-26 (JD), one in Baker Oct. 14 (AS), another in Kelso Oct. 23 - Nov. 10 (JD,EAC), one in Morongo Valley Oct. 27 - Nov. 6 (EAC,LJ) and another in Whitewater Canyon Nov. 5 (LJ), and an ad. male was on the coast at Refugio S.P., Nov.

3-30+ (PL); with more observers aware of the field characters of this bird we have had an increase in the numbers reported, and it is now known to be a regular straggler to California. A ♂ Williamson's Sapsucker on Cuyamaca Mt., San Diego Co., Nov. 15 (AH) was s. of the species' breeding range. A Downy Woodpecker at Holiday L., in the Antelope Valley Oct. 20 - Nov. 10 (KG) was outside the species' known range in California. A Nuttall's Woodpecker near Oxnard Nov. 2 (REW) had wandered somewhat from the nearest known locality of occurrence.

FLYCATCHERS, SWALLOWS — An E. Kingbird at F.C.R., Sept. 1 (GMCC) and one found dead at Harper Dry L., San Bernardino Co., Sept. 30 (EAC) were the only two from the e. portion of the Region; one in Carpinteria, Santa Barbara Co., Sept. 5-7 (PL) along with one in Escondido, San Diego Co., Sept. 22 (JMcN) were on or near the coast. As usual a few Tropical Kingbirds appeared along the coast with 16 reported between Morro Bay and San Diego Sept. 15 - Nov. 10. A W. Kingbird in El Monte Oct. 31 was quite late. A Sulphur-bellied Flycatcher on Pt. Loma Oct. 7 (CC) was only the third ever found in California. A Great Crested Flycatcher, an exceptionally rare straggler to California, was in Santa Barbara Oct. 13-14 (LB). An Ash-throated Flycatcher near Imperial Beach Nov. 24 (DPa) was exceptionally late. There appeared to be more than the normal number of E. Phoebes this fall with one at Scotty's Castle Nov. 3 (LS), another at nearby F.C.R., Oct. 27 (JD), one in Morro Bay Nov. 30 (KC), another in Goleta Nov. 4 (PL), single birds on Pt. Loma Oct. 20-21 (GT) and Nov. 4 (EC), and a seventh on Otay Mesa, San Diego Co., Nov. 24-30+ (DPa). A Willow Flycatcher in Arcadia, Los Angeles Co., Nov. 2-30+ (BCoh) appeared to be wintering. Five Least Flycatchers were found with one at the Santa Maria R. mouth Oct. 7 (LB), one in Santa Barbara Sept. 24 (PL), another at McGrath S.P., Sept. 19 (REW), one on Pt. Loma Sept. 16 (EC) and another there Oct. 21 (DPa); small numbers are now found each fall. A Gray Flycatcher at Mesquite Springs in Death Valley Nov. 19 (DLD) was at an unusual locality for the time of year. Two Coues' Flycatchers, rare stragglers to California, were reported with one near Blythe Nov. 28 (SG) and the other in Los Angeles Nov. 7-30+ (RT). A Rough-winged Swallow in Goleta Nov. 4-5 (LRB) was exceptionally late. A Purple Martin on Pt. Loma Sept. 17 (PU) was the only one reported.

JAYS, TITMICE, NUTHATCHES — Three Steller's Jays on Hunter Mt., Inyo Co., Oct. 11 (LLN) were outside any area of normal occurrence. A flock of 20+ Clark's Nutcrackers in the Granite Mts., San Bernardino Co., Oct. 12 (DM) along with three in the Laguna Mts., San Diego Co., Nov. 11 (BCor) and one in Santa Barbara Oct. 28 (VP) had all wandered some distance from areas of normal occurrence. A few Mountain Chickadees apparently moved out into the high desert with up to six at Oasis in October (REW), up to three at Deep Springs through October (REW) and one in Morongo Valley Aug. 27 - Nov. 30+ (LJ), but were almost nonexistent in the coastal lowlands. A White-breasted Nuthatch at Oasis Oct. 9-30 (LS) was outside the species' normal range in California. Red-breasted

Nuthatches were more numerous and widespread indicating a moderate flight into s. California. Up to three Pygmy Nuthatches in Santa Barbara Nov. 10-30+ (PL) were in the lowlands away from known breeding localities.

WRENS, THRASHERS, THRUSHES — Two Winter Wrens at Deep Springs Oct. 30 (DLD) and one at Ft. Piute, San Bernardino Co., Oct. 11 (REW) were the only ones reported from desert oases, and numbers found along the coast appeared lower than normal. Five Cactus Wrens around Tecopa Aug. 26-27 (JT) were a little n. of the species' normal range. A Gray Catbird, a casual straggler to California, was on Santa Cruz I., Oct. 7 (WDK). A Bendire's Thrasher in Goleta Aug. 25-29 (PL), another near Pt. Mugu Sept. 15 - Oct. 1 (BB) and a third on San Clemente I., Sept. 15-16 (PJ) were all along the coast; a few regularly wander to the coast every fall. A bird showing all the characters of a Curve-billed Thrasher was well-studied at McGrath S.P., Oct. 5 (REW); there is only one other report of this species from the coast of California. Only five Sage Thrashers were reported from along the coast during September and October; this species used to be much more numerous as a migrant on the coast. Varied Thrushes were scarce, but individuals were found as far s. as Blythe Nov. 3 (SC), Morongo Valley Nov. 6 (LJ) and Pt. Loma Oct. 17 (REW). A Swainson's Thrush in Kelso Oct. 10 (LS) was one of a few ever found in the e. portion of this Region in fall.

PIPITS, SHRIKES, VIREOS — A Water Pipit on Mt. Pinos Sept. 7 (JD) established the earliest arrival date for a fall migrant in this Region. Again a few Red-throated Pipits were found along the coast with one in Goleta Oct. 11 (PL), two near Oxnard Oct. 19 (REW) and two or three near Imperial Beach Oct. 8-22 (EC); this species is proving to be regular in this Region at this time of the year. Two Sprague's Pipits were found inland at F.C.R., Oct. 2 (REW) and 23 (JD); previous records are confined to the immediate vicinity of the coast. An imm. N. Shrike at F.C.R., Nov. 3-14 (LLN) and another in the Antelope Valley Nov. 24 (RHN) were the only two found. A brightly marked Solitary Vireo near Imperial Beach Nov. 10 (EC) was clearly of the e. race *V. s. solitarius*; this form is rarely recorded in California. A Yellow-green Vireo, a casual straggler to s. California, was at Gaviota Sept. 8 (LRB). Two Philadelphia Vireos were found; one in Shoshone, Inyo Co., Oct. 23-24 (LB) and the other near Imperial Beach Oct. 12-14 (CGE); two or three are now reported each year.

WOOD WARBLERS — As usual small numbers of Black-and-white Warblers passed through the Region with 26 found along the coast Sept. 7 - Nov. 9, and one inland near Blythe Nov. 10 (SG). Five Prothonotary Warblers were more than expected with one at F.C.R., Oct. 23 (REW) and another 15 mi n. of Blythe Oct. 8-16 (SC) being inland, and one at Gaviota Sept. 20-28 (LRB, ph., S.D.N.H.M.), another near Malibu Sept. 30 - Oct. 11 (H&PB) and a third on Pt. Loma Oct. 10 (CGE) being along the coast. More than 40 Tennessee Warblers were reported with most occurring during October along the coast. In September there were 25 Virginia's Warblers

found along the coast and five seen in the e. portion of the Region. Unexpected were 14 Lucy's Warblers along the coast Aug. 24 - Nov. 30; it has been considered exceptionally rare anywhere w. of the mountains in s. California. A N. Parula, rarer in fall than spring, was at Gaviota Oct. 16-23 (PL), another was in Santa Barbara Oct. 4 (LB), one was on Pt. Fermin Oct. 14-17 (MH), another in Long Beach Nov. 22-26 (JA) and a fifth on Pt. Loma Sept. 24 (EC).

Eight Magnolia Warblers were reported with three along the coast Sept. 29 - Oct. 7, two in the San Bernardino Valley area in early October (HEC&LJ), one on Mt. Palomar Oct. 2 (RH), one in Whitewater Canyon Sept. 30 (LJ) and the eighth at Iron Mt. Pumping Station Oct. 5 (DM). A Cape May Warbler, a rare straggler to California, was in Gaviota Sept. 28 (PL), another was near Oxnard Oct. 15 (REW), one on Pt. Loma Nov. 10-30+, another in Imperial Beach Sept. 23-24 (EAC) and a fifth inland at Finney L., Imperial Co., Nov. 1 (KC, ph., S.D.N.H.M.). As usual Black-throated Blue Warblers appeared in small numbers with nine along the coast and six at desert oases Oct. 1-30, and a male at Fallsvale in the San Bernardino Mts., Nov. 23-27 (MAP). A Townsend's Warbler at L. Arrowhead Aug. 14 (KG) established one of the earliest fall records for the species in s. California. Black-throated Green Warblers appeared in fair numbers with 12 along the coast between Oct. 3 - Nov. 10, one at L. Palmdale in the Antelope Valley Oct. 20 (JD), another near Colton, San Bernardino Co., Oct. 2 (EAC) and a third in Blythe Oct. 14 (IA) inland. Eight Blackburnian Warblers were found along the coast between Sept. 29 - Nov. 16 along with one inland at Morongo Valley Sept. 13 (LJ). A Yellow-throated Warbler, one of the rarer vagrants to reach California, was at Gaviota Oct. 24-25 (LRB). A Grace's Warbler near Malibu Sept. 30 (H&PB) was only the fourth to be found on the coast of California. Six Chestnut-sided Warblers were found along the coast Sept. 26 - Nov. 12 and an exceptionally late bird in



Yellow-throated Warbler, Gaviota, Calif., Oct. 25, 1979. Photo/James M. Greaves.

Marina del Rey Nov. 17 - Dec. 2 (JAJ), but one in the Antelope Valley Oct. 7-10 (TC) and another near Daggett Oct. 3 (EAC) were the only two inland. A Bay-breasted Warbler at Stovepipe Wells in Death Valley Oct. 2 (REW), one in Santa Barbara Oct. 13 (LB), and another in Imperial Beach Oct. 6-10 (PU) were the only three reported. Blackpoll Warblers were relatively numerous with 75± reported Sept. 12 - Nov. 4; one at F.C.R., Oct. 2 (REW) and another in Whitewater Canyon Sept. 12 were the only two found inland, and one on Pt. Loma Nov. 22 (DPA) was exceptionally late.

A **Pine Warbler**, one of the rarest vagrants to reach California, was at Gaviota Oct. 15 (LB). Five **Prairie Warblers** were found with single birds at Gaviota Sept. 6 (PL) and Oct. 1-3 (JAJ), one at Pt. Mugu Nov. 6-7 (REW), two near Imperial Beach Sept. 3 (EC) and Sept. 19-22 (DPA). **Palm Warblers** were more numerous than usual with 95± found along the coast after Oct. 1, but single inland birds were at Deep Springs Oct. 9 (REW) & 22 (JD), Riverside Nov. 19 (DH) Finney L., Nov. 7 (RH). Single **Ovenbirds** reported were at Morro Bay Oct. 19-20 (ph. S.D.N.H.M.), Goleta Nov. 15, dead (SR) and Pt. Loma Oct. 16-17 (EC). **Northern Waterthrushes** were scarce with single birds in Santa Barbara Aug. 28 (JG) and Sept. 5 (PL), and McGrath S.P., Aug. 31 (DLD). A **Kentucky Warbler**, only the fourth found in this Region, was well seen in Imperial Beach Oct. 24 (D&BS). Single **Mourning Warblers** were at Pt. Mugu Sept. 2 (REW) and in Baker Nov. 10 (EAC, *S.B.C.M.); there are only three previous records of this species in the Region. The only **Hooded Warbler** was a male in Santa Barbara Aug. 22 - Sept. 4 (PL). Five **Canada Warblers** were found with single birds in Gaviota Oct. 12-13 (LRB) & 26 (PL), Pt. Mugu Nov. 6 (REW), San Pedro Oct. 14 (MH) and Pt. Loma Oct. 11-12 (EC). As usual small numbers of **Am. Redstarts** passed through the Region with 50± reported after Aug. 24. Single **Painted Redstarts**, exceptionally rare in California, were at Corn Springs near Desert Center Sept. 27 (SG) and on Palos Verdes Pen., Oct. 13 (GT).

BLACKBIRDS, ORIOLES, TANAGERS

— As expected small numbers of Bobolinks appeared coastally with 200+ reported; individuals in Goleta Aug. 24-31 (JD) and McGrath S.P., Nov. 5 (REW) were the earliest and latest. The only Bobolinks inland were singles: Fillmore Sept. 12 (REW), Orange Oct. 5 (AP), Deep Springs Oct. 1 (REW), F.C.R., Nov. 15, exceptionally late (LLN), Harper Dry L., Sept. 30 (EAC) and Cadiz Oct. 14 (AS). Eight **Orchard Orioles** were found Sept. 14 - Oct. 10, with inland individuals in Morongo Valley (LJ) and Laguna Dam (KVR) Sept. 13 & 29 respectively. About 15 **Baltimore Orioles** found along the coast during October and November appeared normal. Five **Rusty Blackbirds** in e. Inyo and San Bernardino counties Oct. 27 - Nov. 27 were normal, but one in Van Nuys, Los Angeles Co., Oct. 31 - Nov. 15 (GH) was unexpected. A **Great-tailed Grackle** in San Pedro Nov. 22 (BD) was the only coastal report. A **Com. Grackle** at F.C.R., Oct. 7 (LLN) was only the eighth found in the Region.

A **Scarlet Tanager** on Otay Mesa Oct. 21 (EC) was eaten by a Sharp-shinned Hawk! A ♂ **Hepatic Tanager**, exceptionally rare away



Bobolink, Goleta, Calif., Sept. 22, 1979. Photo/James M. Greaves.

from limited breeding localities, was near Imperial Beach Nov. 10 (DPA). Summer Tanagers were scarcer than usual with only eight coastal and three inland reports Aug. 29 - Oct. 21.

FINCHES, SPARROWS — Some 20 **Rose-breasted Grosbeaks** Sept. 14 - Oct. 24 was average. A **Black-headed Grosbeak** at Deep Springs Oct. 9 (LS) was a little late for that area. A **Blue Grosbeak** at F.C.R., Oct. 22-23 (JD) was exceptionally late. **Indigo Buntings** were relatively numerous around Santa Barbara with 20 Aug. 20 - Oct. 8 but <15 elsewhere. A **Lazuli Bunting** near Imperial Beach Oct. 19 (AH) was quite late. A ♂ **Painted Bunting** near Imperial Beach Nov. 3 (DPA) was thought to be an escapee. Seven **Dickcissels** were along the coast Aug. 23 - Oct. 20, and one inland at F.C.R., Nov. 3 (JD). The only **Evening Grosbeaks** s. of the extreme n.e. corner of the Region were singles in Santa Barbara Nov. 23-30+ (PL) and the San Gabriel Mts., Nov. 24 (KG). Two **Lawrence's Goldfinches** at Ft. Piute Oct. 11 (REW) were at an interesting locality; few records existing for this area of California. Single coastal **Lark Buntings** were in Goleta Sept. 3-5 (EC), and inland at F.C.R., Oct. 22-23 (LB) and in the Antelope Valley Nov. 10-24 (BB). A **Grasshopper Sparrow** at Deep Springs Oct. 9 (REW), five in the Lanfair Valley, e. San Bernardino Co., Nov. 11 (EAC) and one in Goleta Nov. 2-10 (JG) were all in areas from which few have been recorded. As usual a few **Gray-headed Juncos** moved into the s.e. portion of the Region with singles at Pt. Mugu Oct. 28 (REW) near Malibu Oct. 29 - Nov. 30+ (H&PB), Anaheim Oct. 16 (HEC), and five on Pt. Loma Oct. 21 - Nov. 25 (PU). Six **Tree Sparrows** at F.C.R., Oct. 26 - Nov. 22 (GM&C) and one at Harper Dry L., Nov. 18 (AS) were in the n.e. section of the Region where small numbers are found each fall; singles in Goleta (LB) and Pt. Mugu Nov. 8 & 3 respectively (REW) were from the coast where much rarer. Above average numbers of **Clay-colored Sparrows**

were found with 10± inland and 40± along the coast after Sept. 1. Harris' Sparrows were somewhat scarce, with no more than six in the n.e. portion of the Region and only one on the coast at Goleta Oct. 22 - Nov. 30+, but White-throated Sparrows appeared in about-normal numbers with 30± reported. Approximately 20 Swamp Sparrows were reported Regionwide with one in Kelso Oct. 10-11 (DLD) the earliest.

LONGSPURS — Longspurs were scarcer-than-usual with none in some areas of regular occurrence (e.g., near Imperial Beach). One or two McCown's Longspurs were at Harper Dry L., Nov. 18-20 (EAC, *S.B.C.M.) and one was near Santa Maria Nov. 30+ (REW); this is the rarest of the three species occurring in California. Inland Lapland Longspurs were at F.C.R., Oct. 27 (EC) and two at Harper Dry L., Nov. 18-20 (EAC); 13 in Santa Barbara and Ventura Counties Oct. 27 - Nov. 22 were coastal. Chestnut-collared Longspurs sometimes occur in flocks, but no more than ten together were reported this fall with the total <50.

CONTRIBUTORS — Bert Anderson, David Andres, Ione Arnold, Jon Atwood, Larry R. Ballard, Hal Baxter, Louis Bevier, Peter H. Bloom, Jeff Boyd (JBo), Jean Brant (JBr), Bruce Broadbrooks, Hank & Priscilla Brodtkin (H&PB), Garf Campbell, Kurt Campbell, Eugene A. Cardiff, Chris Carpenter, Henry E. Childs, Sue Clark, Terry Clark, Barbara Cohen (BCoh), Elizabeth Copper, Bart Cord (BCor), Marion T. Corder, Brian Daniels, Fred S. Dexter, Donna L. Dittmann, Shirley Doole, Jon Dunn, Claude G. Edwards, Mike Fredette, Gary Friedrichsen (GRr), Alice Fries, Tom Frillman, Gary Fugle (GFu), **Kimball Garrett (coordinator for Los Angeles County)**, **Sharon Goldwasser (coordinator for Colorado River Valley)**, Jim Greaves, Fred Heath, Mitch Heindel, Andreas Helbig, Roger Higson, Don Hoechlin, Greg Homel, Joseph R. Jehl, Eric V. Johnson, Jerry A. Johnson, Lee Jones, Paul Jorgensen, Thomas W. Keeney, Walter D. Koenig, **Paul Lehman (coordinator for Santa Barbara County)**, Ruth Lohr, John McColm (JMcC), John McDonald (JMcD), Jane McNeil (JMcN), David Melchert, Tony Mercieca, Jim Mills, Richard H. Neuman,

Larry L. Norris, Jerry Oldenettel, Dennis Parker (DPa), Michael A. Patten, Arleta Patterson, Robert L. Pitman, Dave Povey (DPo), Virginia Puddicombe, Ray Quigley, **Sylvia J. Ranney (coordinator for Orange County)**, Phil Reeder, Robert Reynolds, Don Roberson, Ken V. Rosenberg, Stephen Rothstein, Andy Sanders, Larry Sansone, Brad Schram, David D. Smith, Dick & Bea Smith (D&BS), Hal & Nancy Spear (H&NS), Richard Stallcup, James R. Stewart, G. Shumway Suffel, **Fern R. Tainter (coordinator for San Luis Obispo County)**, Jan Tarble, Kathy Thompson, Margaret Thornburgh, Rolly Throckmorton, Gerald Tolman, **Philip Unitt (coordinator for San Diego County)**, Ken Weaver, **Richard E. Webster (coordinator for Ventura County)**, Russ & Marion Wilson (R&MW). Specimen (*), photograph on file (ph.), San Bernardino Cty Mus. (S.B.C.M.), San Diego Nat. Hist. Mus. (S.D.N.H.M.). A plus (+) following a date indicates the bird or birds were present through the end of the period. — **GUY McCASKIE, San Diego Natural History Museum, Balboa Park, P.O. Box 1390, San Diego, California 92112.**